



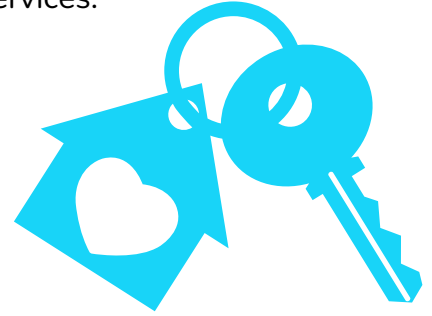
PERMANENT SUPPORTIVE HOUSING (PSH)

WA State Legislature Allocation for Young Adult Permanent Supportive Housing

This proposal requests \$250,000 to support young adults with developmental needs by developing PSH that includes intentional support and services.



BILL SPONSOR: TBD



ISSUE & BACKGROUND

KEY ISSUE

Young adults with developmental needs face significant barriers to accessing PSH due to limited resources, complex service requirements, and gaps in programming.

CONTEXT

Despite WA state's investment in PSH, young adults with developmental needs often struggle with access. Existing chronic housing definitions and funding frameworks are not tailored towards meeting the unique challenges of young adults with developmental needs, which leads to service gaps.

IMPACT

Without the appropriate housing and support, these young adults are at risk of homelessness, limited independence, and adverse developmental outcomes.

PROPOSED SOLUTION

- **Legislation/Regulatory Action:** Allocate \$250,000 to the Office of Homeless Youth to collaborate on developing recommendations to improve PSH access for young adults with developmental needs. This will involve funding, programming enhancements, and awareness campaigns.
- **Resolution:** By addressing funding gaps, refining PSH programming, and building awareness, this proposal aims to remove existing access barriers for young adults, ensuring more robust support within PSH.
- **Legislative Pathway:** We propose a small legislative budget request to achieve the development of these recommendations.

Our policy work is done in partnership with:




[Learn more about our work and connect with us!](#)



BENEFITS & OUTCOMES

Positive Outcomes:




The initiative will foster stable housing, promote independence, and reduce homelessness among young adults with developmental needs.

Who Benefits:




Direct beneficiaries include young adults with developmental disabilities.

Social, Economic, or Public Health Benefits:



Enhancing PSH leads to improved health, social outcomes, and long-term cost saving in state healthcare and housing services.

Measurable Results:



Anticipated metrics include increased availability of PSH services statewide as well as increased enrollment among young adults with developmental needs, reduced homelessness rates, and improved life quality metrics.



TAKE ACTION

Immediate action is required to address the unmet housing and support needs of young adults, which, if ignored, may lead to worsened outcomes and increased state expenditures.

Legislators are encouraged to support the funding allocation and the collaborative efforts with the Office of Homeless Youth to prioritize PSH for young adults.

FOR MORE INFORMATION, CONTACT:

Charles Smith, Mockingbird's Director of Public Policy & Advocacy:
charles.smith@mockingbirdsociety.org

Susie Zhang, Mockingbird's Public Policy & Advocacy Manager:
susie@mockingbirdsociety.org

